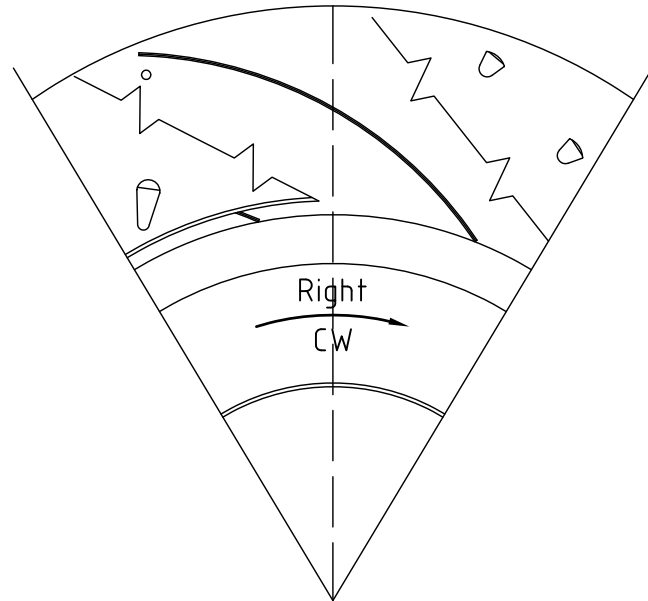
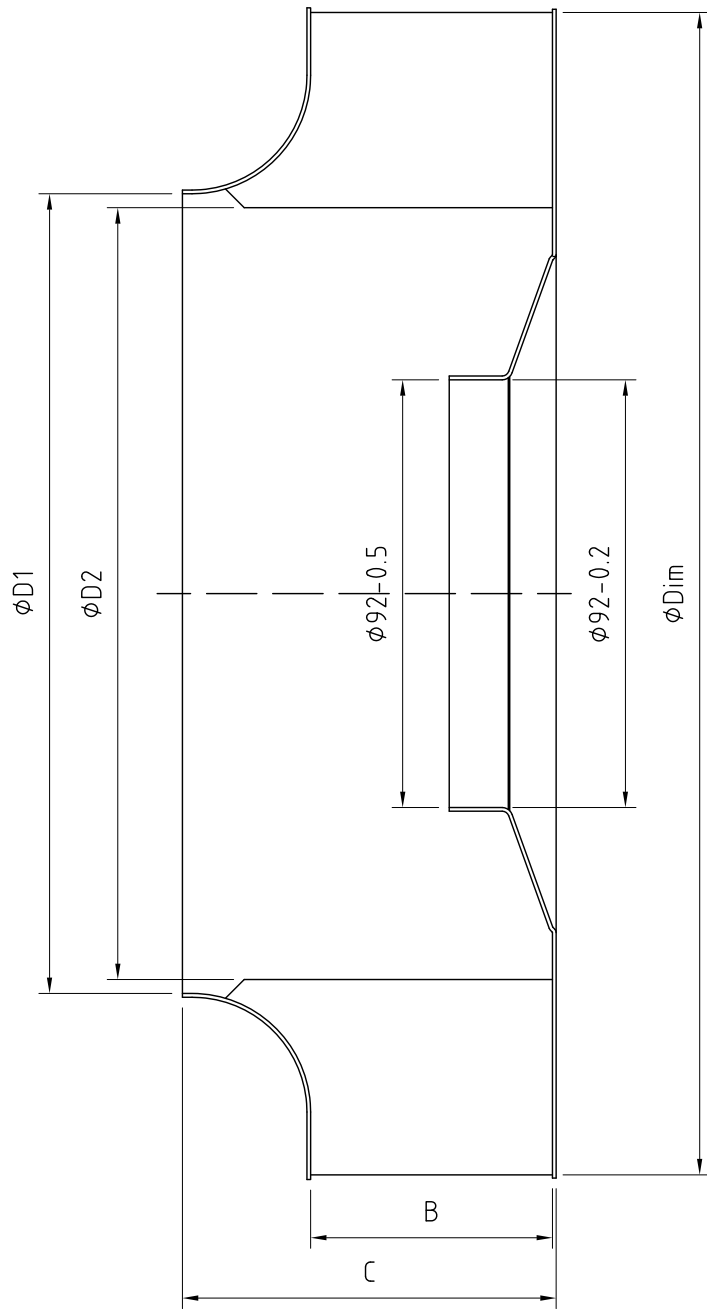


FERGAS Backward Inclined Wheels



Backward inclined wheel description example:

NB-e 250X52 -92 R
 Backward inclined wheel
 Single inlet
 External diameter
 Light opening width
 Center hole diameter
 Clockwise rotation (CW)

ϕDim	B	C	$\phi D1$	$\phi D2$
180	32	48.3	131	133.7
190	45	65	132	120
225	37, 48, 63	62.3, 73.3, 88.3	153	146.8
250	40, 52, 56	68.3, 80.3, 84.3	172	166
280	40, 50, 78	71.4, 81.4, 109.4	191	188

The single inlet backward inclined NB series wheels are available in diameters 180,190,225,250 and 280 mm in various widths. Wheels are offered as standard in galvanised steel but other materials can be offered at a premium charge. Wheels are made for pressfit on to a 92 mm external rotormotor.